



GAT MONTHLY MEMBERSHIP PROGRESS REPORT

Results as of: 4/30/2022

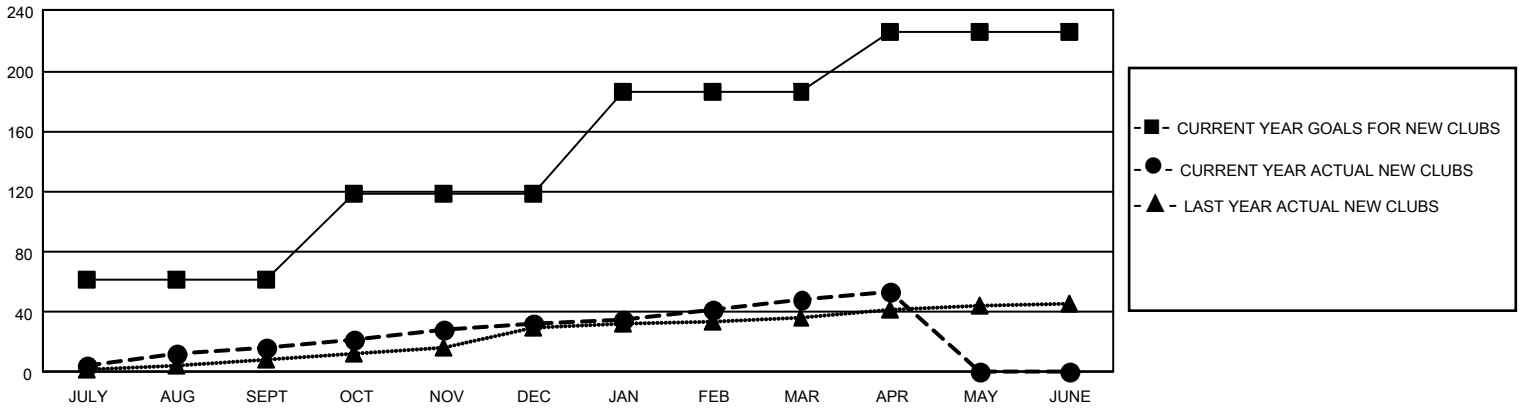
GAT Constitutional Area 5 - Korea

REPORT DOES NOT INCLUDE CLUBS IN UNDISTRICTED AREAS.

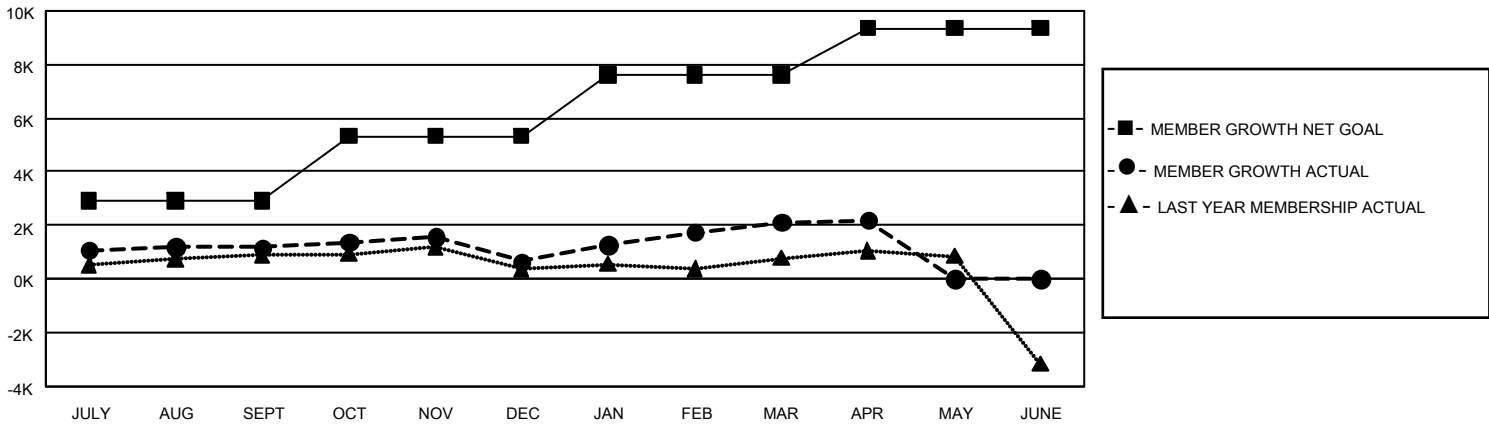
Clubs			
RESULTS FOR 2021-2022			
QUARTER	NEW CLUB GOAL	NEW CLUBS	DROPPED CLUBS
JULY/AUG/SEPT	183	16	27
OCT/NOV/DEC	174	17	10
JAN/FEB/MAR	201	15	2
APR/MAY/JUNE	120	6	2

Members			
RESULTS FOR 2021-2022			
QUARTER	MEMBER GROWTH NET GOAL	MEMBER GROWTH ACTUAL	DROPPED MEMBERS ACTUAL (including transfers)
JULY/AUG/SEPT	2925	3,743	2,365
OCT/NOV/DEC	2400	2,161	2,604
JAN/FEB/MAR	2293	2,288	785
APR/MAY/JUNE	1738	617	503

GOALS AND ACTUAL NEW CLUBS CUMULATIVE



GOALS AND ACTUAL MEMBERS CUMULATIVE



DROPPED CLUBS: 41	
DROPPED MEMBERS	
DECEASED	193
CLUB CANCELLED	443
OTHER	5,621
TOTAL	6,257

1,441 CLUBS OF 2,094 ADDED 1 OR MORE NEW MEMBERS

[CLICK HERE FOR CUMULATIVE MEMBERSHIP DATA](#)

GENDER DISTRIBUTION	
MALE	55,942 (74.26%)
FEMALE	19,386 (25.74%)
NON BINARY	0 (0.00%)
PREFER NOT TO ANSWER	0 (0.00%)
TOTAL FAMILY UNIT MEMBERS 5,586	
FAMILY MEMBERS PAYING HALF DUES 3,245	